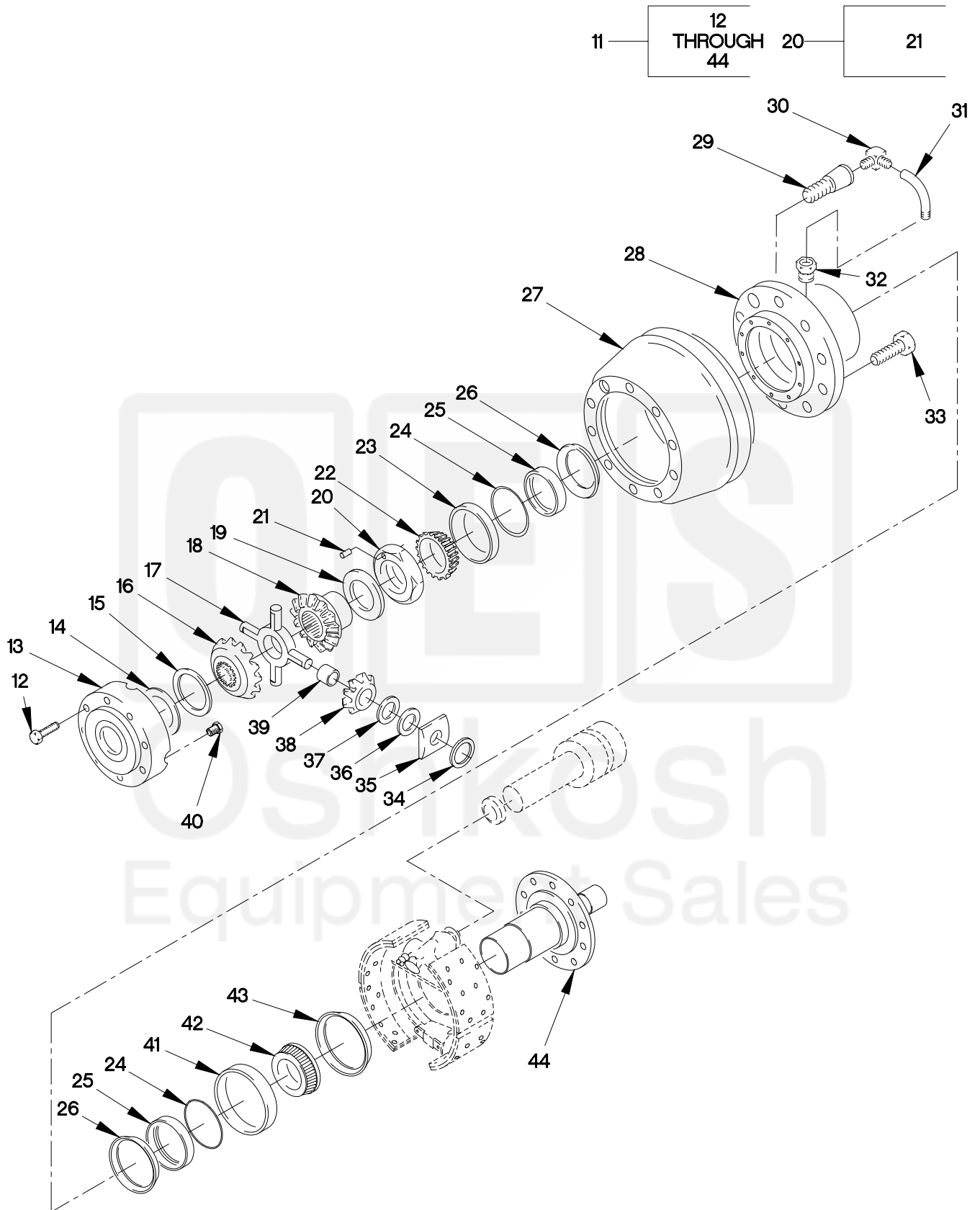


SECTION II

TM 9-2320-366-24P-1



1100A-2C

FIGURE 159. REAR/INTERMEDIATE AXLE AND WHEEL END ASSEMBLY (SHEET 2 OF 2)

SECTION II

TM 9-2320-366-24P-1

| (1)<br>ITEM<br>NO  | (2)<br>SMR<br>CODE | (3)<br>CAGEC | (4)<br>PART<br>NUMBER | (5)<br>DESCRIPTION AND<br>USABLE ON CODE (UOC)   | (6)<br>QTY |
|--|--------------------|--------------|-----------------------|--|------------|
| GROUP 1100: REAR AXLE ASSEMBLY<br>FIG.159 REAR/INTERMEDIATE AXLE AND<br>WHEEL END ASSEMBLY |                    |              |                       |  |            |
| 1  | PRFHH              | 19207        | 12421818-001          | AXLE ASSEMBLY,AUTOM STD<br>( INTERMEDIATE ).....<br>UOC:MAA ,MAB ,MAC ,MAE ,MAH ,MAJ ,MAK ,MAL ,<br>MAM ,MWB ,MWC ,MWH ,MWJ ,MWL , | 1          |
| 1  | PRFHH              | 19207        | 12421818-002          | AXLE ASSEMBLY,AUTOM TRACTOR &<br>WRECKER ( INTERMEDIATE ).....<br>UOC:MAF ,MAG ,MWF ,  | 1          |
| 1  | PRFHH              | 19207        | 12421819-001          | AXLE ASSEMBLY,AUTOM STD (REAR).....<br>UOC:MAA ,MAB ,MAC ,MAE ,MAH ,MAJ ,MAK ,MAL ,<br>MAM ,MWB ,MWC ,MWH ,MWJ ,MWL ,              | 1          |
| 1  | PRFHH              | 19207        | 12421819-002          | AXLE ASSEMBLY,AUTOM TRACTOR &<br>WRECKER ( INTERMEDIATE ).....<br>UOC:MAF ,MAG ,MWF ,  | 1          |
| 2  | PAOZZ              | 78500        | 1250T1086             | .CAP,GREASE.....   | 2          |
| 3  | PAOZZ              | 78500        | 1229C1121             | .RING,RETAINING.....   | 2          |
| 4  | PAOZZ              | 78500        | 3202-Z-9932           | .AXLE,STRAIGHT.....  | 1          |
| 4  | PAOZZ              | 78500        | 3202B9830R            | .SHAFT,AXLE,AUTOMOTI.....  | 1          |
| 5  | PAOZZ              | 78500        | 3202-Y-9931           | .AXLE,STRAIGHT.....  | 1          |
| 5  | PAOZZ              | 78500        | 3202A9829L            | .SHAFT,AXLE,AUTOMOTI.....  | 1          |
| 6  | PAFZZ              | 78500        | 1229-Y-1507           | .WASHER,FLAT.....  | 20         |
| 7  | PAFZZ              | 78500        | S-2924-2-A            | .SCREW,CAP,HEXAGON H.....  | 20         |
| 8  | PAOZZ              | 81348        | WW-P-471ACBBUE        | .PLUG,PIPE.....  | 1          |
| 9  | XAHZZ              | 78500        | C23201D8272           | .HOUSING ASSY,REAR REAR/REAR,HEAVY<br>DUTY.....<br>UOC:MAF ,MAG ,MWF ,   | 1          |
| 9  | XAHZZ              | 78500        | C13201B8270           | .HOUSING ASSY, FORWARD/REAR,HEAVY<br>DUTY.....<br>UOC:MAF ,MAG ,MWF ,  | 1          |
| 9  | XAHZZ              | 78500        | C23201W7797           | .HOUSING ASSY, FORWARD/REAR 6X6....<br>UOC:MAA ,MAB ,MAC ,MAE ,MAH ,MAJ ,MWB ,MWC ,<br>MWH ,MWJ ,MWL ,                             | 1          |
| 9  | XAHZZ              | 78500        | C63201Z7800           | .HOUSING ASSY,REAR REAR/REAR 6X6....<br>UOC:MAA ,MAB ,MAC ,MAE ,MAH ,MAJ ,MWB ,MWC ,<br>MWH ,MWJ ,MWL ,                            | 1          |
| 10   | PAOZZ              | 78500        | 1250-E-473            | .PLUG,MACHINE THREAD DRAIN PLUG....  | 1          |
| 11   | AFFFF              | 78500        | A5333A4317            | .WHEEL END ASSY LEFT HAND SIDE.....<br>UOC:MAA ,MAB ,MAC ,MAE ,MAH ,MAJ ,MAK ,MAL ,<br>MAM ,MWB ,MWC ,MWH ,MWJ ,MWL ,              | 1          |

SECTION II

TM 9-2320-366-24P-1

| (1)<br>ITEM<br>NO | (2)<br>SMR<br>CODE | (3)<br>CAGEC | (4)<br>PART<br>NUMBER | (5)<br>DESCRIPTION AND<br>USABLE ON CODE (UOC)  | (6)<br>QTY |
|-------------------|--------------------|--------------|-----------------------|---|------------|
| 11                | AFFFF              | 78500        | A6333A4317            | .WHEEL END ASSY RIGHT HAND SIDE....<br>UOC:MAA,MAB,MAC,MAE,MAH,MAJ,MAK,MAL,<br>MAM,MWB,MWC,MWH,MWJ,MWL, | 1          |
| 11                | AFFFF              | 78500        | A7333A4317            | .WHEEL END ASSY LEFT HAND SIDE.....<br>UOC:MAF,MAG,MWF,   | 1          |
| 11                | AFFFF              | 78500        | A8333A4317            | .WHEEL END ASSY RIGHT HAND SIDE....<br>UOC:MAF,MAG,MWF,   | 1          |
| 12                | PAOZZ              | 78500        | 10X1563               | ..SCREW,CAP,HEXAGON H PART OF KIT P/N<br>4725 .....   | 12         |
| 13                | PAOZZ              | 78500        | 3266-A-1275           | ..COVER,ACCESS PART OF KIT P/N<br>4725 .....  | 1          |
| 14                | PAOZZ              | 78500        | 1229A4161             | ..BEARING,WASHER,THRU PART OF KIT P/N<br>4725 .....   | 1          |
| 15                | PAOZZ              | 78500        | 1228J1154             | ..BEARING,WASHER,THRU PART OF KIT P/N<br>4725 .....   | 1          |
| 16                | PAOZZ              | 78500        | 2234F1202             | ..GEAR,BEVEL PART OF KIT P/N 4725 ..  | 1          |
| 17                | KFOZZ              | 78500        | 3278Z1118             | ..SPIDER,DIFFERENTIAL PART OF KIT P/N<br>4725 .....   | 1          |
| 18                | PAOZZ              | 78500        | 2234E1201             | ..GEAR,BEVEL PART OF KIT P/N 4725 ..  | 1          |
| 19                | KFOZZ              | 78500        | 2203J9500             | ..SHIM .012IN (.30MM) PART OF KIT P/<br>4715,4726 .....   | V          |
| 19                | KFOZZ              | 78500        | 2203K9501             | ..SHIM .015IN (.38MM) PART OF KIT P/<br>4715,4726 .....   | V          |
| 19                | KFOZZ              | 78500        | 2203N9504             | ..SHIM .031IN (.79MM) PART OF KIT P/<br>4715,4726 .....   | V          |
| 19                | KFOZZ              | 78500        | 2203L9502             | ..SHIM .020IN (.51MM) PART OF KIT P/<br>4715,4726 .....   | V          |
| 19                | KFOZZ              | 78500        | 2203M9503             | ..SHIM .025IN (.64MM) PART OF KIT P/<br>4715,4726 .....   | V          |
| 20                | PAOZZ              | 78500        | A1227X1480            | ..RETAINER,PACKING WHEEL BEARING<br>NUT (INCLUDES 2 PIN 19X1067).....                                   | 1          |
| 21                | XA                 | 78500        | 19X1067               | ...PIN,STRAIGHT,HEADLE SOLD AS<br>PART OF A1227X1480 ONLY.....  | 2          |
| 22                | PAOZZ              | 60038        | 47686                 | ..CONE AND ROLLERS,TA PART OF KIT P/N<br>4726 .....   | 1          |
| 23                | PAOZZ              | 61220        | 47620                 | ..CUP,TAPERED ROLLER PART OF KIT P/N<br>4726 .....  | 1          |
| 24                | PAOZZ              | 78500        | 1229K3131             | ..RING,RETAINING.....   | 2          |
| 25                | PAOZZ              | 78500        | 2297R6648             | ..SEAL,PLAIN PART OF KIT P/N 4726 ..  | 2          |
| 26                | PAOZZ              | 78500        | A-1205-Q-2435         | ..SEAL ASSY,CTIS PART OF KIT P/N<br>4726 .....  | 2          |
| 27                | PAOZZ              | 78500        | 3219-W-4833           | ..BRAKE DRUM.....   | 1          |
| 28                | KFOZZ              | 78500        | A-333-A-4317          | ..HUB,WHEEL END ASSY PART OF KIT P/N<br>4727.....   | 1          |
| 29                | PAOZZ              | 78500        | 20X2123               | ..SCREW,MACHINE LEFT HAND.....  | 1          |

SECTION II

TM 9-2320-366-24P-1

| (1)<br>ITEM<br>NO | (2)<br>SMR<br>CODE | (3)<br>CAGEC | (4)<br>PART<br>NUMBER | (5)<br>DESCRIPTION AND<br>USABLE ON CODE (UOC)      | (6)<br>QTY |
|-------------------|--------------------|--------------|-----------------------|---|------------|
| 29                | PAOZZ              | 78500        | 20X2122               | ..SCREW,MACHINE RIGHT HAND.....                     | 1          |
| 30                | PAOZZ              | 78500        | 2206D1018             | ..ELBOW,BOSS.....                                   | 1          |
| 31                | PAOZZ              | 78500        | A-3196-X-1194         | ..TUBE ASSEMBLY,METAL.....                          | 1          |
| 32                | PAOZZ              | 78500        | 2297P3838             | ..SEAT,TUBE.....                                    | 1          |
| 33                | PAOZZ              | 78500        | 20X1577               | ..BOLT,FIREBRICK ANCH LEFT SIDE....                 | 9          |
| 33                | PAOZZ              | 78500        | 20X1578               | ..BOLT,FINNED NECK RIGHT SIDE.....                  | 9          |
| 34                | PAOZZ              | 78500        | 5-X-1155              | ..O-RING PART OF KIT P/N 4725 .....                 | 4          |
| 35                | PAOZZ              | 78500        | 1229W4157             | ..BEARING,WASHER,THRU PART OF KIT P/N<br>4725 ..... | 4          |
| 36                | PAOZZ              | 78500        | 1228K1155             | ..BEARING,WASHER,THRU PART OF KIT P/N<br>4725 ..... | 4          |
| 37                | PAOZZ              | 78500        | 1229Z4160             | ..BEARING,WASHER,THRU PART OF KIT P/N<br>4725 ..... | 4          |
| 38                | PAOZZ              | 78500        | 2233J1102             | ..GEAR,BEVEL PART OF KIT P/N 4725 ..                | 4          |
| 39                | PAOZZ              | 78500        | 1228H1152             | ..BEARING,WASHER,THRU PART OF KIT P/N<br>4725 ..... | 4          |
| 40                | PAOZZ              | 78500        | 1850T 124             | ..PLUG,PIPE,MAGNETIC PART OF KIT P/N<br>4725 .....  | 1          |
| 41                | PAOZZ              | 60038        | JM716610              | ..CUP,TAPERED ROLLER PART OF KIT P/N<br>4726 .....  | 1          |
| 42                | PAOZZ              | 60038        | JM716649              | ..CONE AND ROLLERS,TA PART OF KIT P/N<br>4726 ..... | 1          |
| 43                | PAOZZ              | 78500        | A-1205-R-2254         | ..SEAL,PLAIN ENCASED PART OF KIT P/N<br>4726 .....  | 1          |
| 44                | PAOOO              | 78500        | A3213-Q-1759          | ..SPINDLE,WHEEL,DRIVI.....                          | 1          |

END OF FIGURE